



NEAL'S CREEK PLANTATION

\$1,787,500

550 ACRES



CALHOUN COUNTY, GEORGIA

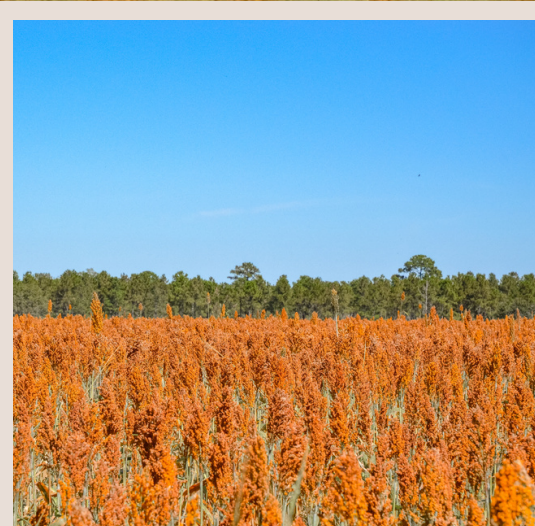
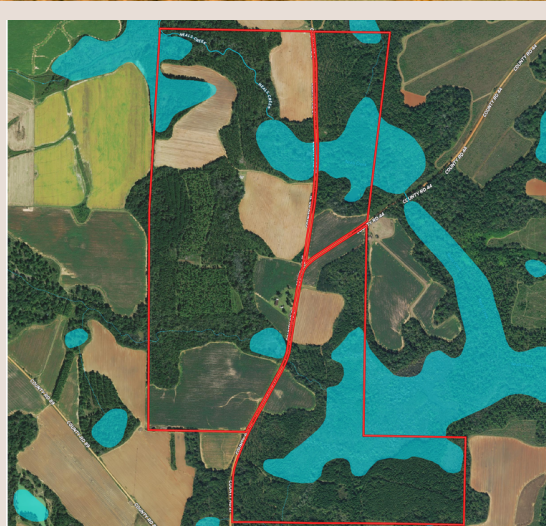
Looking for a diverse property in one of Southwest Georgia's premier big buck counties? Good soils, good timber, and abundant game are all right here! A mixture of income-producing farmland with significant pine stands makes this incredible property very attractive for investment, hunting, and farming. Give us a call today for a look!



PLANTATION HIGHLIGHTS

- 700 sq. ft. cabin with electricity and well
- 2 bedrooms, 1 bath
- 170+/- Acres of Dryland Cropland
- Balance in Planted Pines and Mature Hardwood and Pine Timber
- Excellent Hunting for Deer, Turkey, Duck, Dove, and Small Game
- Duck Pond
- Neal's Creek
- Large Machine Shed and Grain Bin
- Crop Bases





SOILS REPORT



SOILS REPORT

I All Polygons 557.47 ac

SOIL CODE	SOIL DESCRIPTION	ACRES	%	CPI	NCCPI	CAP
Gr	Grady loam, 0 to 2 percent slopes, frequently ponded	168.08	30.15	0	19	5w
FeB	Faceville sandy loam, 2 to 5 percent slopes	142.18	25.5	0	77	2e
GsB	Greenville sandy loam, 2 to 5 percent slopes	124.46	22.33	0	74	2e
GsA	Greenville sandy loam, 0 to 2 percent slopes	55.45	9.95	0	74	1
HM	Herod-Muckalee association	23.31	4.18	0	60	5w
GsC	Greenville sandy loam, 5 to 8 percent slopes	21.42	3.84	0	73	3e
FeA	Faceville sandy loam, 0 to 2 percent slopes	20.69	3.71	0	77	1
W	Water	1.14	0.2	0	-	-
GoA	Goldsboro loamy sand, 0 to 2 percent slopes	0.47	0.08	0	61	2w
CnA	Clarendon loamy sand, 0 to 2 percent slopes	0.27	0.05	0	63	2w
TOTALS		557.49(*)	100%	-	57.5	2.93

(*) Total acres may differ in the second decimal compared to the sum of each acreage soil. This is due to a round error because we only show the acres of each soil with two decimal.

I Boundary 308.35 ac

SOIL CODE	SOIL DESCRIPTION	ACRES	%	CPI	NCCPI	CAP
FeB	Faceville sandy loam, 2 to 5 percent slopes	106.99	34.7	0	77	2e
Gr	Grady loam, 0 to 2 percent slopes, frequently ponded	77.63	25.18	0	19	5w
GsB	Greenville sandy loam, 2 to 5 percent slopes	65.11	21.12	0	74	2e
GsA	Greenville sandy loam, 0 to 2 percent slopes	22.61	7.33	0	74	1
FeA	Faceville sandy loam, 0 to 2 percent slopes	20.69	6.71	0	77	1
GsC	Greenville sandy loam, 5 to 8 percent slopes	14.85	4.82	0	73	3e
GoA	Goldsboro loamy sand, 0 to 2 percent slopes	0.47	0.15	0	61	2w
TOTALS		557.49(*)	100%	-	61.33	2.66

(*) Total acres may differ in the second decimal compared to the sum of each acreage soil. This is due to a round error because we only show the acres of each soil with two decimal.

I Boundary 67.01 ac

SOIL CODE	SOIL DESCRIPTION	ACRES	%	CPI	NCCPI	CAP
GsB	Greenville sandy loam, 2 to 5 percent slopes	24.42	36.44	0	74	2e
HM	Herod-Muckalee association	23.31	34.79	0	60	5w
Gr	Grady loam, 0 to 2 percent slopes, frequently ponded	7.07	10.55	0	19	5w
GsC	Greenville sandy loam, 5 to 8 percent slopes	6.57	9.8	0	73	3e

SOILS REPORT

GsA	Greenville sandy loam, 0 to 2 percent slopes	4.5	6.72	0	74	1
W	Water	1.14	1.7	0	-	-
TOTALS		557.49(*)	100%	-	61.97	3.42

(*) Total acres may differ in the second decimal compared to the sum of each acreage soil. This is due to a round error because we only show the acres of each soil with two decimal.

 Boundary 182.11 ac

SOIL CODE	SOIL DESCRIPTION	ACRES	%	CPI	NCCPI	CAP
Gr	Grady loam, 0 to 2 percent slopes, frequently ponded	83.38	45.78	0	19	5w
FeB	Faceville sandy loam, 2 to 5 percent slopes	35.19	19.32	0	77	2e
GsB	Greenville sandy loam, 2 to 5 percent slopes	34.93	19.18	0	74	2e
GsA	Greenville sandy loam, 0 to 2 percent slopes	28.34	15.56	0	74	1
CnA	Clarendon loamy sand, 0 to 2 percent slopes	0.27	0.15	0	63	2w
TOTALS		557.49(*)	100%	-	49.38	3.22

(*) Total acres may differ in the second decimal compared to the sum of each acreage soil. This is due to a round error because we only show the acres of each soil with two decimal.

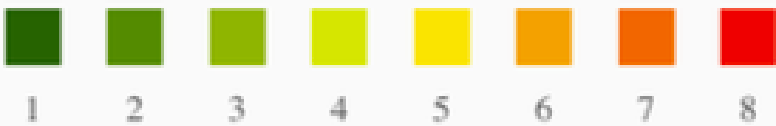
SOILS REPORT

Capability Legend

Increased Limitations and Hazards

Decreased Adaptability and Freedom of Choice Users

Land, Capability



'Wild Life'	•	•	•	•	•	•	•	•
Forestry	•	•	•	•	•	•	•	
Limited	•	•	•	•	•	•	•	
Moderate	•	•	•	•	•	•		
Intense	•	•	•	•	•			
Limited	•	•	•	•				
Moderate	•	•	•					
Intense	•	•						
Very Intense	•							

Grazing

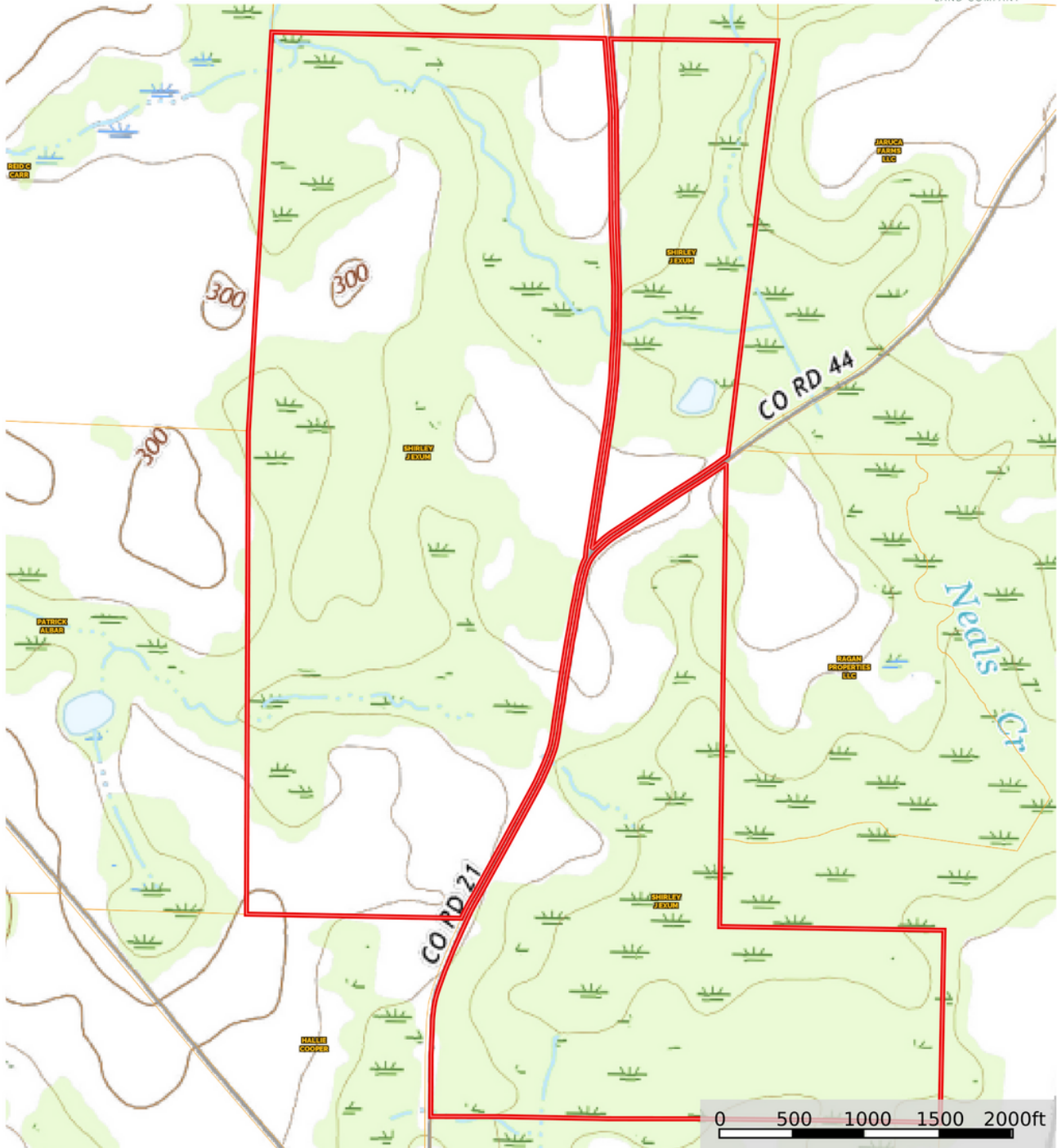
Cultivation

(c) climatic limitations (e) susceptibility to erosion
(s) soil limitations within the rooting zone (w) excess of water

TOPOGRAPHY MAP

Georgia, AC +/-

new era
LAND COMPANY



Boundary

Brandon Vann
www.neweraland.co

307 W. Lamar St. Americus, Ga. 31709

The information contained herein was obtained from sources deemed to be reliable. MapRight Services makes no warranties or guarantees as to the completeness or accuracy thereof.